

INNOVATIVE Lighting DALLAS

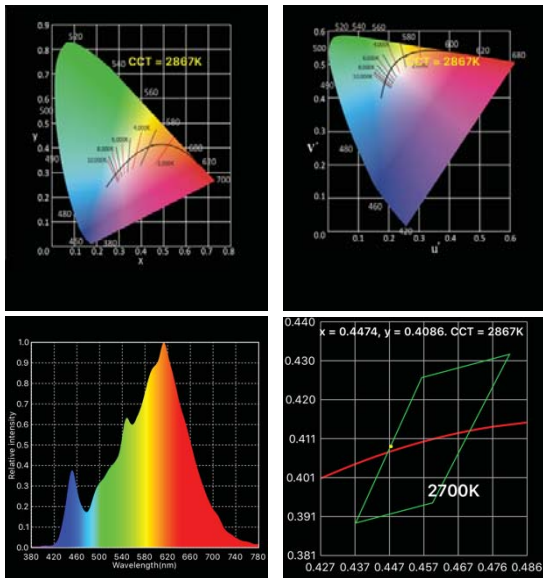
T (972) 721-1177, 2324 Hinton Drive, Irving, Texas 75061-1201
www.Innovative-Lighting.com

SLIM LINE RIGID LED BAR WITH LOW PROFILE DIFFUSER LENS

IL-LNF-4.4-3000K



90 CRI DIMS to 1%



Parameter	Value
CCT	2867 K
Re(R1~R15)	82
CQS	87
Illuminance	753 lux
Foot Candle	70.0 fc
CIE1931 x	0.4474
CIE1931 y	0.4086
CIE1976 u'	0.2553
CIE1976 v'	0.5247
λp	613 nm
λD	583 nm
Purity(Pe)	57 %
Duv	0.0005
SP Ratio	1.3
PPFD(380-780nm)	11.66 μmol/m ² /s
TLCI(Qa)	77.4
GAI	50.4

PRODUCT SPECIFICATIONS

Color Rendering Index: 90

Lumen Output:

218 per Foot (715.22 per Meter)

Circuit Type: Constant Voltage

12V - Can be cut every 2.00"

24V - Can be cut every 4.00"

Class 2 Power Unit Only

Input Voltage: Maximum 13.8V

Maximum Power Consumption:

4.44 Watts per Foot (14.4 per Meter)

Beam Angle: 120°

Maximum Surge Protection:

(For Short Periods) up to 18V

Operating Temperature Range:

-4°F to 122°F (-20°C to 50°C)

Dimming: Consistently to 1% with Innovative Lighting, Inc LED Drivers (See LED Driver Information Sheets)

Finish: Heat-Dissipating Aluminum (Custom Colors Available)

Lens: Fire-Resistant Extruded Acrylic (Custom Colors Available)

Color Temperatures Available:

IL-LNF-4.4-2700K

IL-LNF-4.4-3000K - Chart on Left

IL-LNF-4.4-3500K

IL-LNF-4.4-4000K

IL-LNF-4.4-5000K

IC Based Constant Current Regulator with Temperature Compensation Circuits

Lengths from 6.0" to 96.0" (152.4mm to 2438.4mm)

Patent-Licensed LEDs

Total Quality-Controlled Manufacturing Process

Three-Stage Binning System

Suitable for Wet Locations.

Use Only with Class 2 Power Unit

Suitable for Cove Lighting

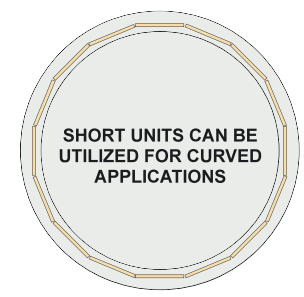
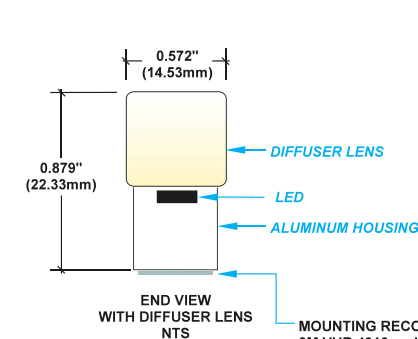
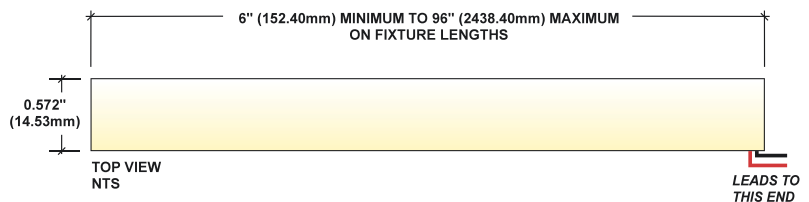
Suitable for Installation in the Storage Area of Clothes Closet

Suitable for Cabinet or Under Cabinet Use

IES No. ITL86305

cULus No. E469630

CE ISO 9001 IP66 Assembled in the USA



MOUNTING RECOMMENDATIONS
3M VHB 4910 and/or 3M 230 SEALANT and/or MECHANICAL FASTENERS
ACTUAL MOUNTING TO BE DETERMINED AND PROVIDED BY CUSTOMER

IL-LNF-4.4-3000K_Brochure_2016-09-22.pdf © 2016 Innovative Lighting, Inc. All rights reserved.