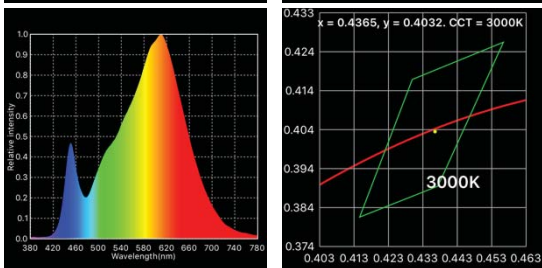
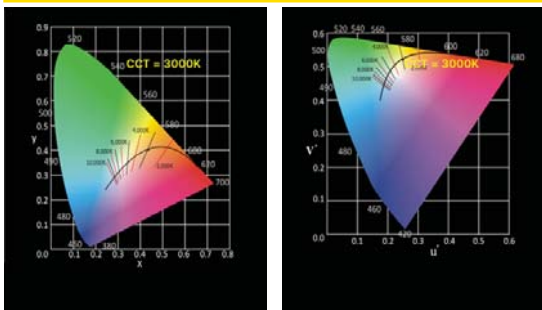


LED PODS IL-POD-3.0-3000K

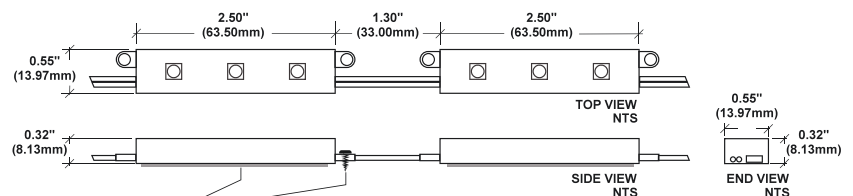


Parameter	Value
CCT	3000 K
Re(R1~R15)	80
CQS	85
Illuminance	8308 lux
Foot Candle	771.9 fc
CIE1931 x	0.4365
CIE1931 y	0.4032
CIE1976 u'	0.2506
CIE1976 v'	0.5210
λp	610 nm
λD	583 nm
Purity(Pe)	52 %
Duv	-0.0003
SP Ratio	1.4
PPFD(380-780nm)	125.05 μmol/m ² /s
TLCI(Qa)	73.4
GAI	54.7

PRODUCT SPECIFICATIONS

- Color Rendering Index:** 90
- Lumen Output:** 309 per Foot (1013.8 per Meter)
- Circuit Type:** 12V DC Parallel
- Input Voltage:** Maximum 13.8V
- Maximum Power Consumption:** 3.00 Watts per Foot (7.20 per Meter)
- POD Length:** 2.45" (62.31mm)
- Beam Angle:** 120°
- Maximum Surge Protection:** (For Short Periods) up to 18V
- Operating Temperature Range:** -4°F to 122°F (-20°C to 50°C)
- Dimming:** Consistently to 1% with Innovative Lighting, Inc LED Drivers (See LED Driver Information Sheets)
- Color Temperatures Available:**
 - IL-POD-3.0-2500K
 - IL-POD-3.0-2700K
 - IL-POD-3.0-3000K - Chart on Left**
 - IL-POD-3.0-3500K
 - IL-POD-3.0-4000K
 - IL-POD-3.0-5000K

- IC Based Constant Current Regulator with Temperature Compensation Circuits
- Lengths from 6.0" to 96.0" (152.4mm to 2438.4mm)
- Patent-Licensed LEDs
- Total Quality-Controlled Manufacturing Process
- Three-Stage Binning System
- Suitable for Wet Locations. Use Only with Class 2 Power Unit
- Suitable for Cove Lighting
- Suitable for Installation in the Storage Area of Clothes Closet
- Suitable for Cabinet or Under Cabinet Use



MOUNTING RECOMMENDATIONS
3M VHB 4910 and/or 3M 230 SEALANT and/or MECHANICAL FASTENERS
ACTUAL MOUNTING TO BE DETERMINED AND PROVIDED BY CUSTOMER

“Most efficient of all LED sources in its class. Flexible conductors, form to curve, cost less to install, operate, and maintain.”