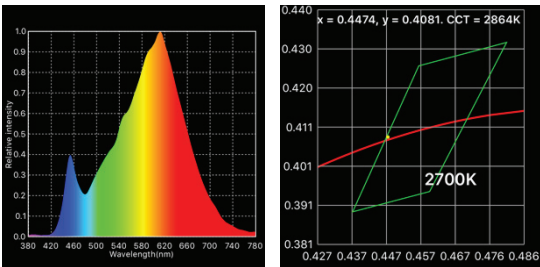
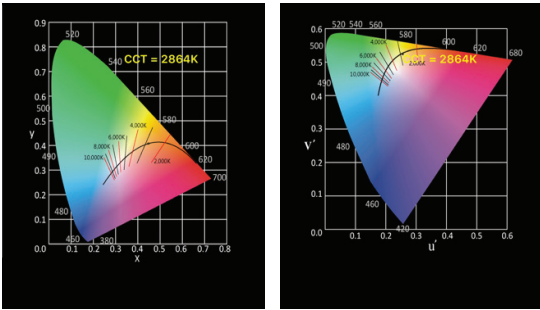
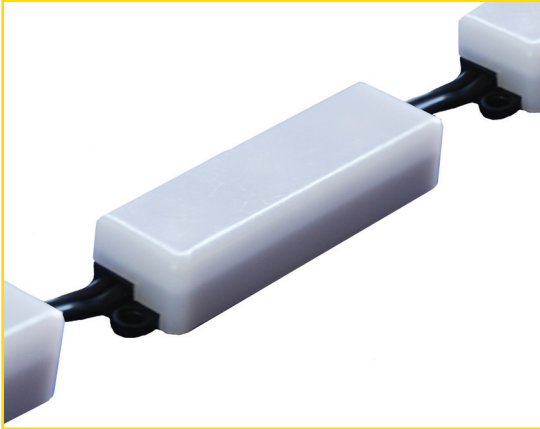


Type: _____
 Color Temp: _____
 Date: _____

T (972) 721-1177, 2324 Hinton Drive, Irving, Texas 75061-1201
www.Innovative-Lighting.com

LED PODS WITH WHITE DIFFUSER LENS



Parameter	Value
CCT	2864 K
Re(R1~R15)	80
CQS	85
Illuminance	3807 lux
Foot Candle	353.7 fc
CIE1931 x	0.4474
CIE1931 y	0.4081
CIE1976 u'	0.2555
CIE1976 v'	0.5245
λ_p	612 nm
λ_D	583 nm
Purity(Pe)	57 %
Duv	0.0003
SP Ratio	1.3
PPFD(380-780nm)	58.53 $\mu\text{mol}/\text{m}^2/\text{s}$
TLCI(Qa)	74.7
GAI	49.6

Part # IL-POD-LWH-3.0-3000K PRODUCT SPECIFICATIONS

Color Rendering Index: 90

Lumen Output:
309 per Foot (1013.8 per Meter)

Circuit Type: Constant Voltage
12V - Can be cut every 2.00"
24V - Can be cut every 4.00"
Class 2 Power Unit Only

Input Voltage: Maximum 13.8V

Maximum Power Consumption:
3.00 Watts per Foot (7.20 per Meter)

POD Length: 2.45" (62.31mm)

Beam Angle: 120°

Maximum Surge Protection:
(For Short Periods) up to 18V

Operating Temperature Range:
-4°F to 122°F (-20°C to 50°C)

Dimming: Consistently to 1% with
Innovative Lighting, Inc LED Drivers
(See LED Driver Information Sheets)

Lens: Fire-Resistant Injection Molded,
White (Custom colors incur
add'l charges & extended delivery)

Color Temperatures Available:

IL-POD-LWH-3.0-2500K

IL-POD-LWH-3.0-2700K

IL-POD-LWH-3.0-3000K - Chart on Left

IL-POD-LWH-3.0-3500K

IL-POD-LWH-3.0-4000K

IL-POD-LWH-3.0-5000K

IC Based Constant Current Regulator
with Temperature Compensation Circuits

Lengths from 6.0" to 96.0"
(152.4mm to 2438.4mm)

Patent-Licensed LEDs

Total Quality-Controlled
Manufacturing Process

Three-Stage Binning System

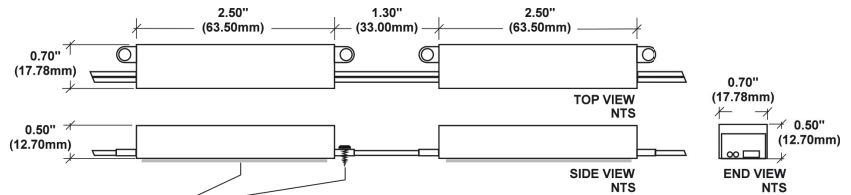
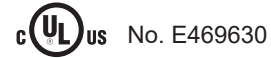
Suitable for Wet Locations.

Use Only with Class 2 Power Unit

Suitable for Cove Lighting

Suitable for Installation in the Storage
Area of Clothes Closet

Suitable for Cabinet or Under Cabinet Use



MOUNTING RECOMMENDATIONS
3M VHB 4910 and/or 3M 230 SEALANT and/or MECHANICAL FASTENERS
ACTUAL MOUNTING TO BE DETERMINED AND PROVIDED BY CUSTOMER

*“Most efficient of all LED sources
in its class. Flexible conductors,
form to curve, cost less to install,
operate, and maintain.”*